

OBIEE Metadata Repository Deployment Guide
Oracle FLEXCUBE Investor Servicing
Release 12.3.0.0.0
[September] [2016]



Table of Contents

- 1. OBIEE METADATA REPOSITORY DEPLOYMENT GUIDE..... 1-1**
 - 1.1 INTRODUCTION 1-1
 - 1.1.1 *Layers in RPD*..... 1-1
 - 1.1.2 *FCIS OBIEE RPD*..... 1-2
 - 1.2 PREREQUISITES 1-2
 - 1.2.1 *Hardware / Software Required* 1-2
 - 1.3 DEPLOYMENT IN OBIEE 1-2
 - 1.3.1 *Rpd Connection Changes*..... 1-2
 - 1.3.2 *Deploying RPD*..... 1-9

1. OBIEE Metadata Repository Deployment Guide

1.1 Introduction

The Oracle Business Intelligence Server is a stand-alone process that maintains the logical data model which it provides to BI Presentation Services via ODBC. Metadata is maintained for the data model in a local proprietary file called the repository file (rpd). On the back-end, the BI Server connects to customer data stores via data source adaptors.

1.1.1 Layers in RPD

The Physical layer defines the data sources to which Oracle BI Server submits queries and the relationships between physical databases and other data sources that are used to process multiple data source queries. The recommended way to populate the Physical layer is by importing metadata from databases and other data sources. The data sources can be of the same or different varieties. You can import schemas or portions of schemas from existing data sources. Additionally, you can create objects in the Physical layer manually.

When you import metadata, many of the properties of the data sources are configured automatically based on the information gathered during the import process. After import, you can also define other attributes of the physical data sources, such as join relationships, that might not exist in the data source metadata. There can be one or more data sources in the Physical layer, including databases, spreadsheets, and XML documents. In this example, you import and configure tables from the sample SH schema included with the Oracle 10g database.

The Business Model and Mapping layer of the Administration Tool defines the business, or logical, model of the data and specifies the mappings between the business model and the Physical layer schemas. This is where the physical schemas are simplified to form the basis for the users' view of the data. The Business Model and Mapping layer of the Administration Tool can contain one or more business model objects. A business model object contains the business model definitions and the mappings from logical to physical tables for the business model.

The main purpose of the business model is to capture how users think about their business using their own vocabulary. The business model simplifies the physical schema and maps the users' business vocabulary to physical sources. Most of the vocabulary translates into logical columns in the business model. Collections of logical columns form logical tables. Each logical column (and hence each logical table) can have one or more physical objects as sources.

There are two main categories of logical tables: fact and dimension. Logical fact tables contain the measures by which an organization gauges its business operations and performance. Logical dimension tables contain the data used to qualify the facts.

The Presentation layer is built after the Physical layer and Business Model and Mapping layer and adds a level of abstraction over the Business Model and Mapping layer. It is the view of the data seen by end users in client tools and applications, such as Oracle BI Answers. The Presentation layer provides a means to further simplify or customize the Business Model and Mapping layer for end users. For example, you can organize columns into catalogs and folders.

Simplifying the view of the data for users makes it easier to craft queries based on users' business needs because you can expose only the data that is meaningful to the users, organize the data in a way that aligns with the way users think about the data, and rename data as necessary for the set of users.

You typically create Presentation layer objects by dragging objects from the Business Model and Mapping layer. Corresponding objects are automatically created in the Presentation layer. Presentation layer objects can then be renamed and reorganized.

1.1.2 FCIS OBIEE RPD

In FCIS OBIEE we have a single RPD. In this document we will see how merge a RPD to FCIS Metadata RPD. We will also see how to deploy sample dashboards generated using these RPDs.

1.2 Prerequisites

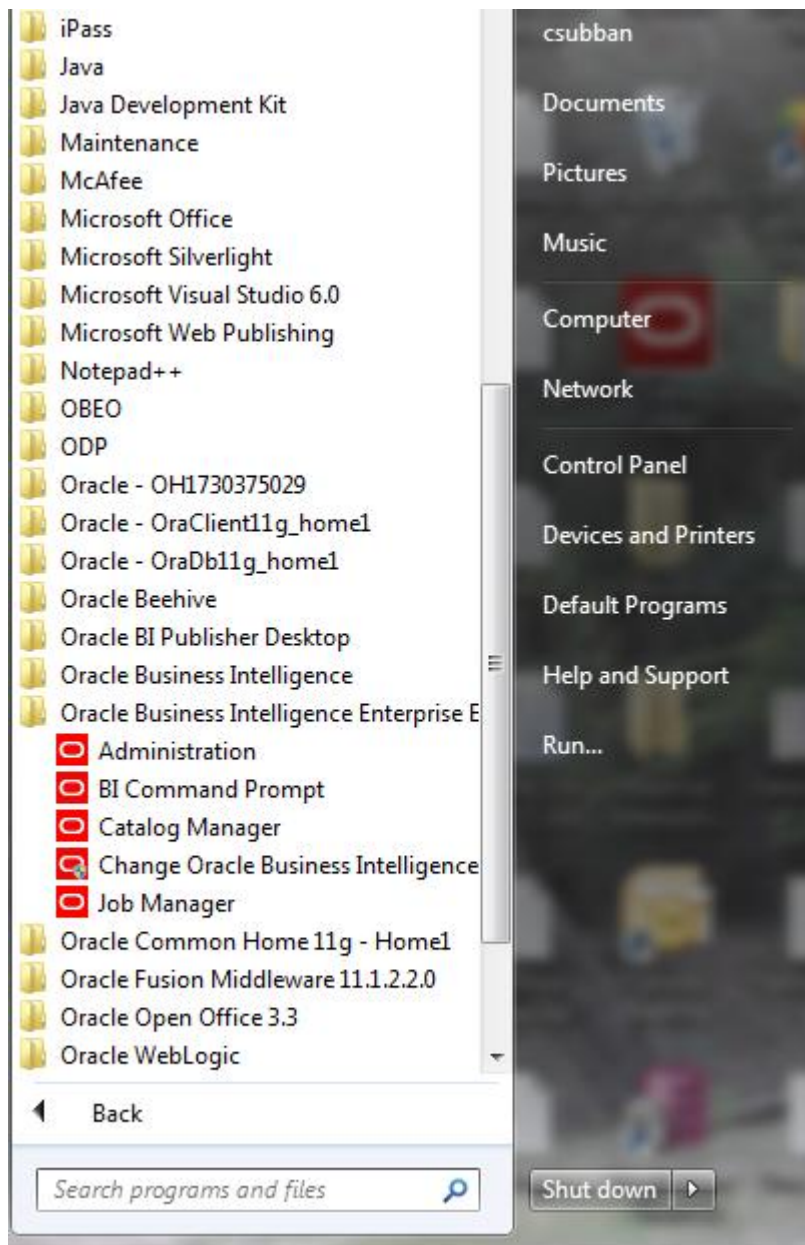
1.2.1 Hardware / Software Required

Server	OBIEE 12.2.1.0.0
--------	------------------

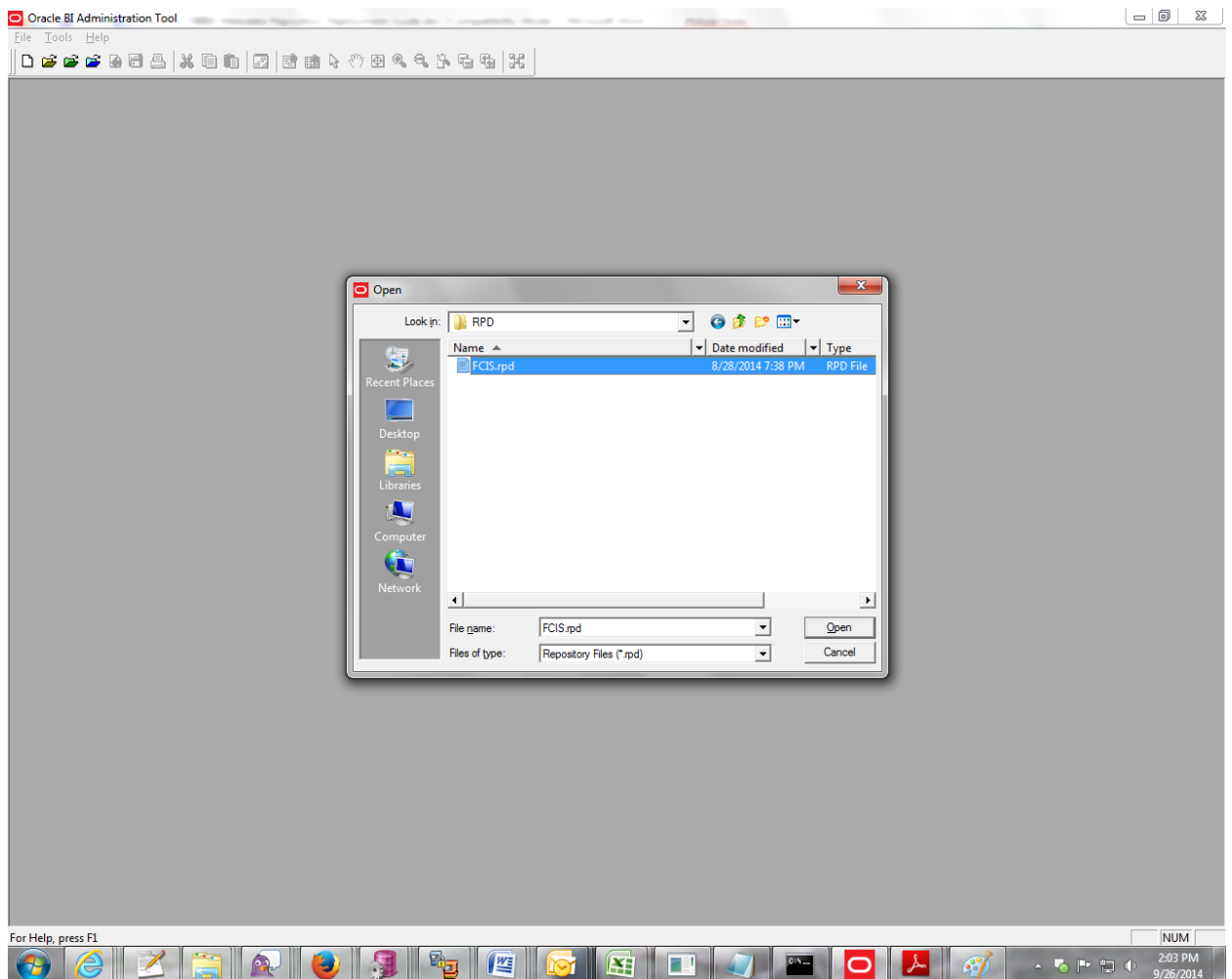
1.3 Deployment in OBIEE

1.3.1 Rpd Connection Changes

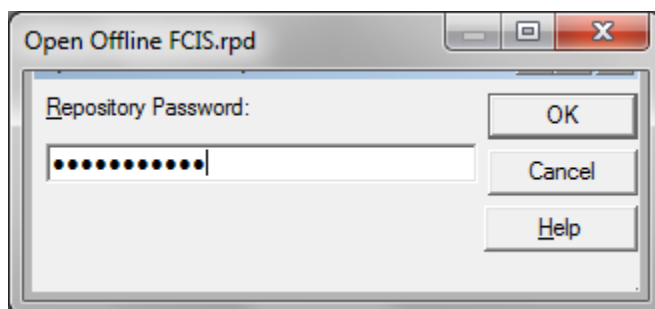
1. Open OBIEE Administration tool.



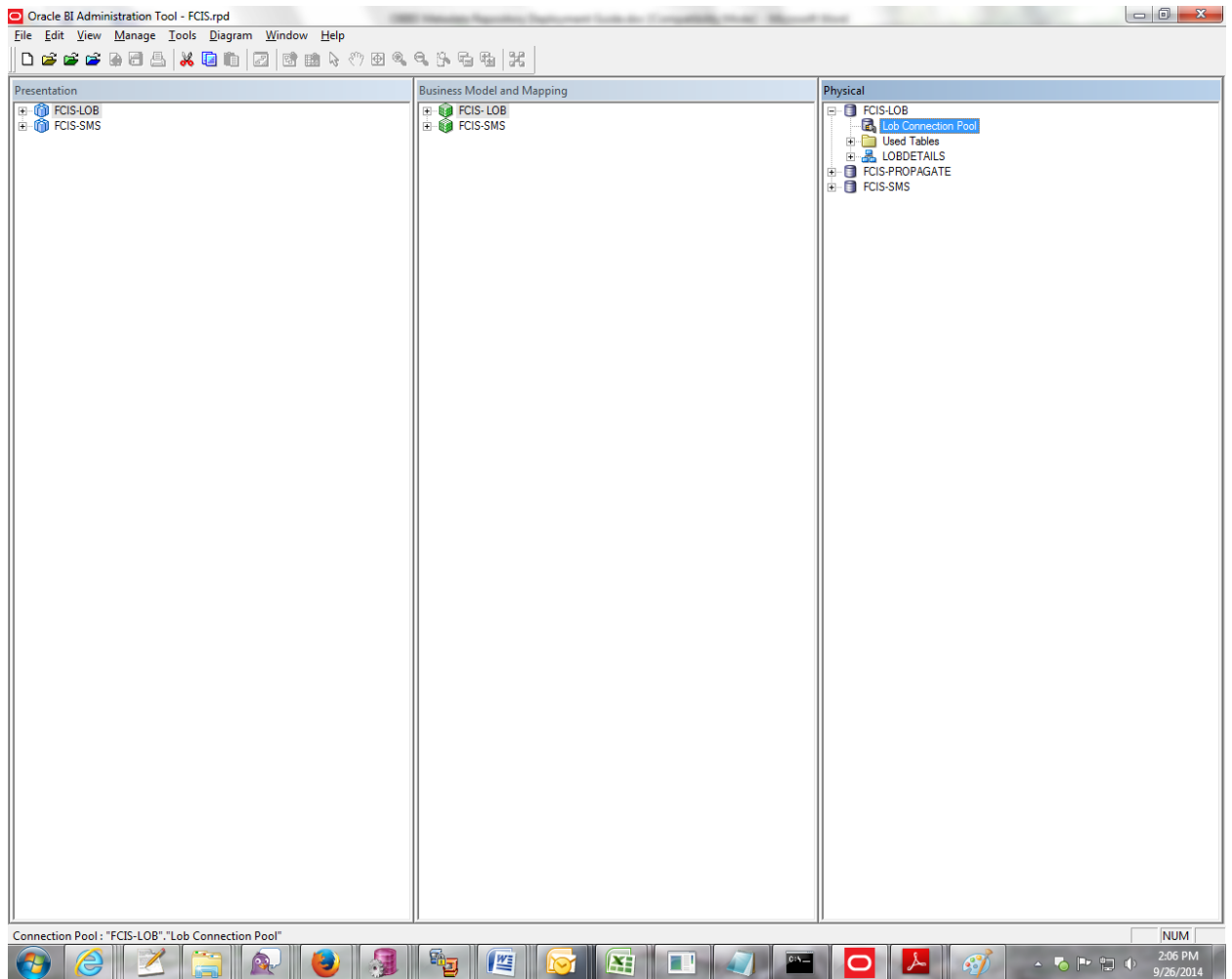
2. Open rpd in offline mode.



3. Enter Password: Weblogic123 and click 'OK'.



4. Double click on connection pool.



5. Change Data source name.

Connection Pool - Lob Connection Pool

General | Connection Scripts | XML | Write Back | Miscellaneous

Name:

Call interface:

Maximum connections:

☐ Require fully qualified table names

Data source name:

☒ Shared logon

User name: Password:

☒ Enable connection pooling

Timeout: (minutes)

☒ Use multithreaded connections

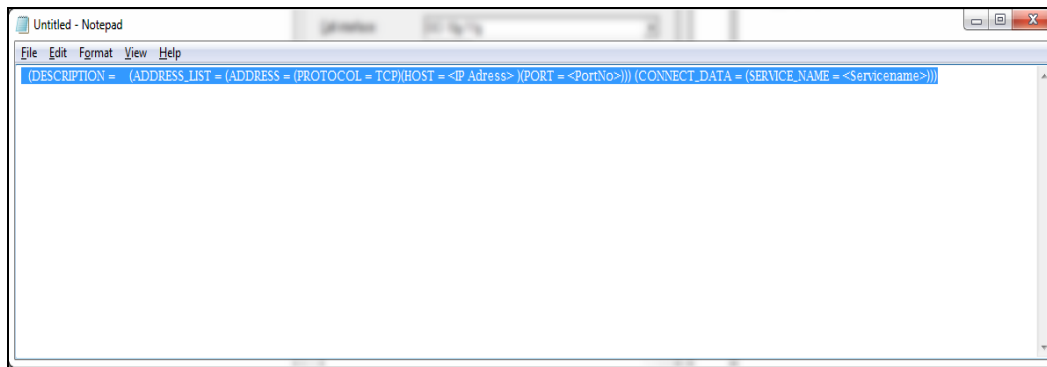
☒ Parameters supported

Isolation level:

Description:

6. Change Data source name for the marked info given in the below format:

(DESCRIPTION = (ADDRESS_LIST = (ADDRESS = (PROTOCOL = TCP)(HOST = <Host Address>)(PORT = <Port>)))(CONNECT_DATA = (SERVICE_NAME <Servicename>)))



7. Enter User ID and password and click OK. Again enter the same password when it prompts. Save the Rpd changes.

Connection Pool - Lob Connection Pool

General | Connection Scripts | XML | Write Back | Miscellaneous

Name: Lob Connection Pool Permissions...

Call interface: OCI 10g/11g

Maximum connections: 10

☐ Require fully qualified table names

Data source name: (DESCRIPTION=(ADDRESS=(PROTOCOL=TCP)(HOST=...))

☒ Shared logon

User name: LOB1204DEV Password:

☒ Enable connection pooling

Timeout: 5 (minutes)

☒ Use multithreaded connections

☒ Parameters supported

Isolation level: Default

Description:

OK Cancel Help

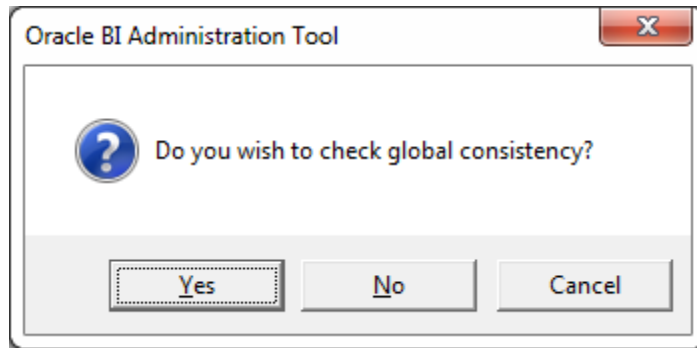
8. Click 'OK' and the following screen is displayed:

Confirm Password

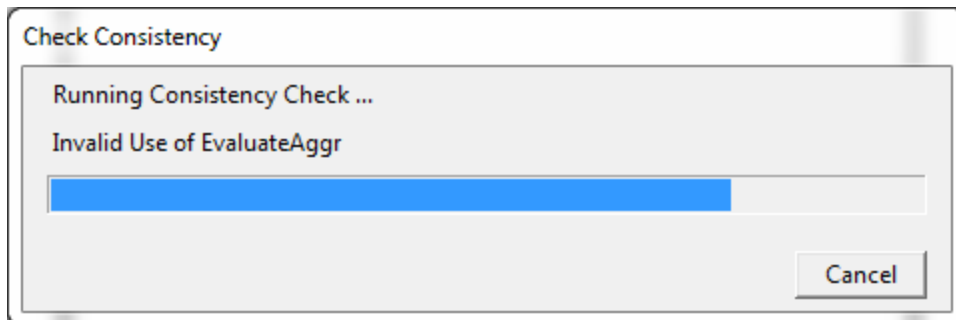
Password:

OK Cancel

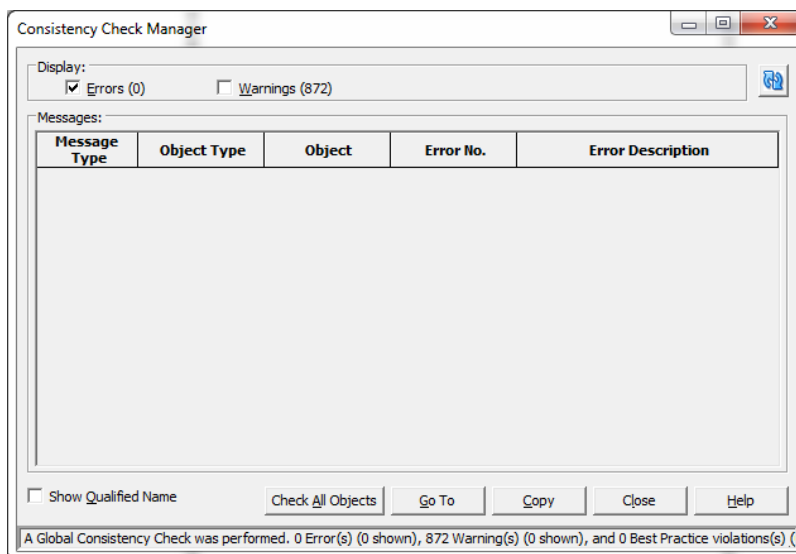
9. Click 'OK' and the following screen is displayed:



10. Click "Yes."



11. Click "Close in below window."



1.3.2 Deploying RPD

Earlier OBIEE RPD deployment was through Enterprise manager, now a command from putty.

```
sh data-model-cmd.sh uploadrpd -I <rpd name> -W <RPD password> -SI ssi -U <console user name> -P <console password>
```

Eg: sh data-model-cmd.sh uploadrpd -I FCIS.rpd -W weblogic123 -SI ssi -U weblogic -P weblogic123.



OBIEE Metadata Repository Deployment Guide
[September] [2016]
Version 12.3.0.0.0

Oracle Financial Services Software Limited
Oracle Park
Off Western Express Highway
Goregaon (East)
Mumbai, Maharashtra 400 063
India

Worldwide Inquiries:
Phone: +91 22 6718 3000
Fax: +91 22 6718 3001
www.oracle.com/financialservices/

Copyright © [2007], [2016], Oracle and/or its affiliates. All rights reserved.

Oracle and Java are registered trademarks of Oracle and/or its affiliates. Other names may be trademarks of their respective owners.

U.S. GOVERNMENT END USERS: Oracle programs, including any operating system, integrated software, any programs installed on the hardware, and/or documentation, delivered to U.S. Government end users are "commercial computer software" pursuant to the applicable Federal Acquisition Regulation and agency-specific supplemental regulations. As such, use, duplication, disclosure, modification, and adaptation of the programs, including any operating system, integrated software, any programs installed on the hardware, and/or documentation, shall be subject to license terms and license restrictions applicable to the programs. No other rights are granted to the U.S. Government.

This software or hardware is developed for general use in a variety of information management applications. It is not developed or intended for use in any inherently dangerous applications, including applications that may create a risk of personal injury. If you use this software or hardware in dangerous applications, then you shall be responsible to take all appropriate failsafe, backup, redundancy, and other measures to ensure its safe use. Oracle Corporation and its affiliates disclaim any liability for any damages caused by use of this software or hardware in dangerous applications.

This software and related documentation are provided under a license agreement containing restrictions on use and disclosure and are protected by intellectual property laws. Except as expressly permitted in your license agreement or allowed by law, you may not use, copy, reproduce, translate, broadcast, modify, license, transmit, distribute, exhibit, perform, publish or display any part, in any form, or by any means. Reverse engineering, disassembly, or decompilation of this software, unless required by law for interoperability, is prohibited.

The information contained herein is subject to change without notice and is not warranted to be error-free. If you find any errors, please report them to us in writing.

This software or hardware and documentation may provide access to or information on content, products and services from third parties. Oracle Corporation and its affiliates are not responsible for and expressly disclaim all warranties of any kind with respect to third-party content, products, and services. Oracle Corporation and its affiliates will not be responsible for any loss, costs, or damages incurred due to your access to or use of third-party content, products, or services.